

# Safe Operation Protocol of Delphi Archaeological Museum During the COVID -19 Pandemic

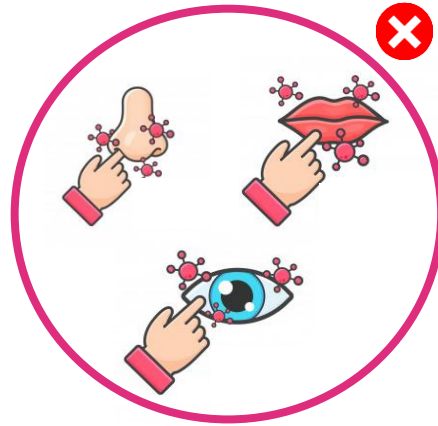
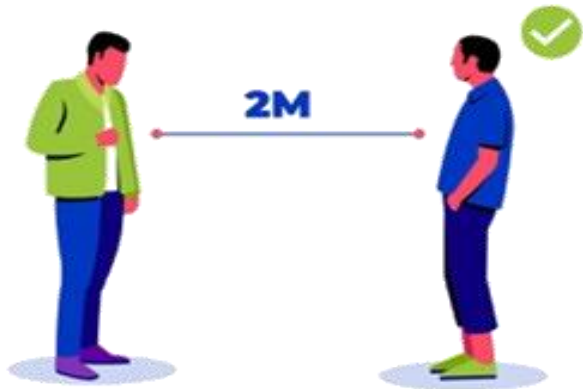


June 2020

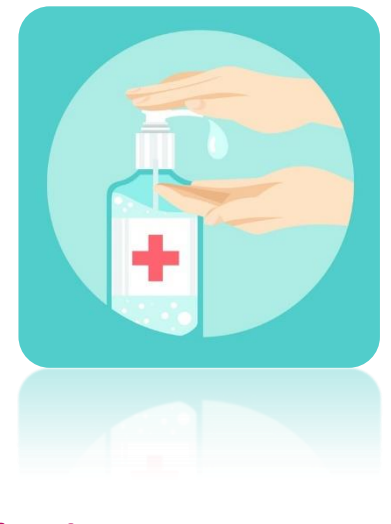
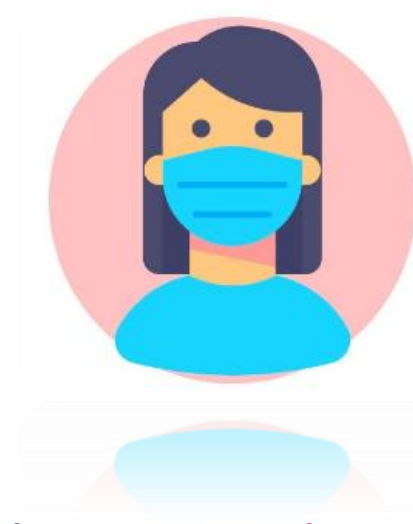
# Safe operation protocol of Delphi Archaeological Museum during the COVID -19 pandemic

## Personal protective measures

- **Mandatory use of a non-medical mask** by employees, guides and visitors, **disposal and use of an alcoholic antiseptic solution with a content of 70% ethyl alcohol at least**



- Maintaining the appropriate **distances of at least 1.5 meters outdoors and 2 meters indoors**
- **Avoid touching parts of the face (eyes, nose, mouth)**



- **Washing hands with liquid soap and water or using alcohol antiseptic (70%) in clean hands before eating or drinking, after contact with shared objects, after using the sanitary facilities and before leaving the room.**
- **Jewelry removal during washing**



# Safe operation protocol of Delphi Archaeological Museum during the COVID -19 pandemic

## Personal protective measures

- **Guides:**
  - **Mandatory use of a non-medical mask**
  - **Strict adherence to distances**
  - **Frequent hand antiseptic**
  - **extensive use of electronic ticket**
- **Avoiding physical contact** in cash registers and counters
- **use of wireless tour** to ensure compliance with the distances where it is available
- **Groups of visitors (groups) not more than eight persons**
- **Continuous monitoring of national guidelines**  
<https://eody.gov.gr/neos-koronaio-covid-19/>.



Strict adherence to distances



Avoiding physical contact in cash registers



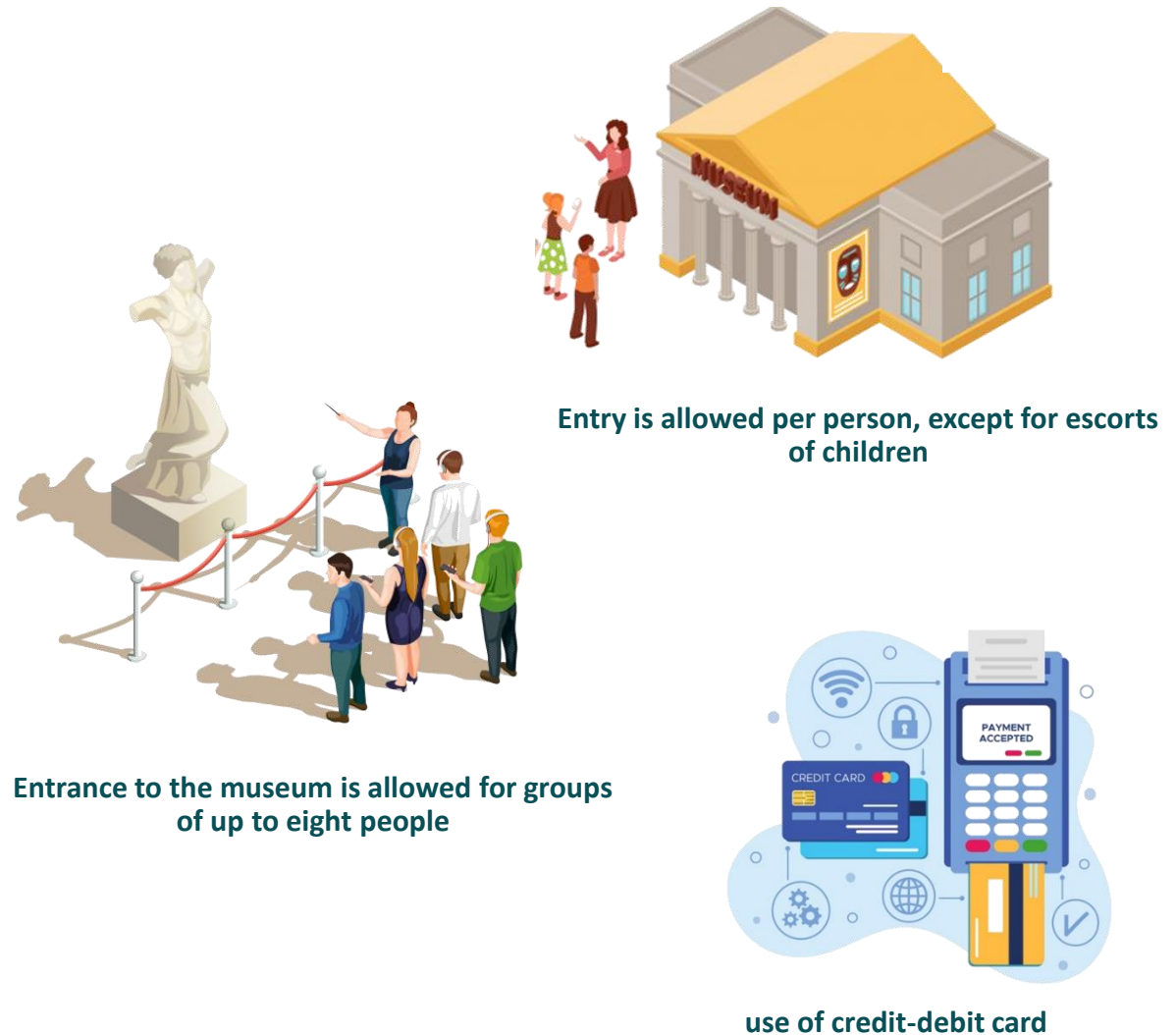
Use of wireless tour



# Safe operation protocol of Delphi Archaeological Museum during the COVID -19 pandemic

## Especially for the archeological museum of Delphi

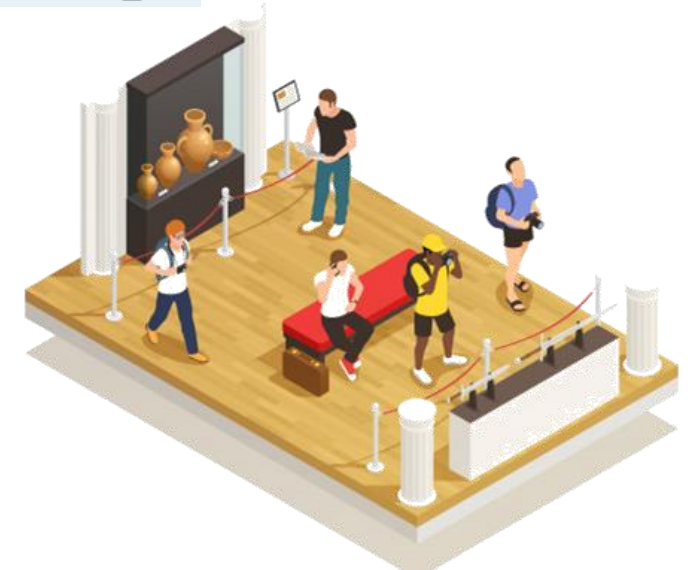
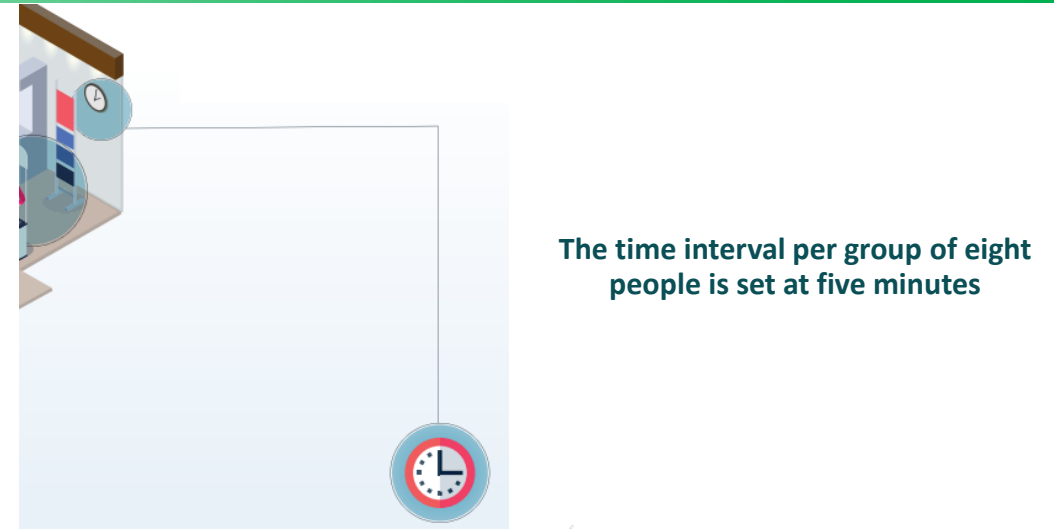
- The entrance to the courtyard of the museum is to the right of the temporary boarding - disembarkation area. The exit is to the left of this space.
- **Entrance to the museum is allowed for groups of up to eight people** except the tour guide or leader, when it comes to organized visits.
- Strict recommendation for the **use of credit-debit card**.
- **Before any transaction**, it is mandatory to use a sufficient amount of **antiseptic**.
- In case of compulsory use of the handwritten receipt, the tour **guide / leader must bring his own pen**.
- **Entry is allowed per person**, except for escorts of children, maintaining the required distance of two meters from the archaeologist in control and between them.



# Safe operation protocol of Delphi Archaeological Museum during the COVID -19 pandemic

## Especially for the archeological museum of Delphi

- The time interval per group of eight people is set at five minutes. Staying in each room does not exceed five to six minutes. The halls of Taurus, of the Athenian Treasury and of the Tholos are excluded from the group tours due to their small size. Maximum stay in the museum is 50 minutes for each group or for a single visitor from the moment of entry.
- The maximum number of visitors inside the museum is one hundred (100) people and per room eight to ten people.
- The archaeologist in the inspection must wear a protective headgear other than the mask.
- All security staff must carry their official ID in a conspicuous place.
- The use of the elevator is allowed exclusively with the use of a mask and up to two people for: a. chief guards b. cleaning staff, c. people with mobility impairment (disabled) and attendants, d. cashiers. Excluded from use are other staff, guides, visitors, etc.



The maximum number of visitors inside the museum is one hundred and eight to ten people per room

# Safe operation protocol of Delphi Archaeological Museum during the COVID -19 pandemic

## Especially for the archeological museum of Delphi

- **Permanent presence of cleaning staff in the sanitary facilities** and necessary disinfection of the museum twice a day with a solution consisting of 9 parts water and 1 part chlorine.
- The implementation of the **tactile tour program for people with visual impairments** continues in accordance with the approved measures of EODY.
- The use of luggage space is temporarily not appropriate.
- The security personnel breaks are made by one to two people in the courtyard of the museum.
- The responsibility for the operation of the store, the refreshment room and the vending machines rests with the responsibilities of the Fund of Archaeological Proceeds



Permanent presence of cleaning staff in the sanitary facilities



The responsibility for the operation of the refreshment room rests with the responsibilities of the Fund of Archaeological Proceeds



luggage space is temporarily not appropriate

### Responsible for the Organization Operation:

Athanasia Psalti, Director of the Ephorate of Antiquities of Phocis

Tel: 2265082313/346

apsalti@culture.gr